

T190

HIGH SPEED VARIABLE DATE PRINTING SYSTEM

- ◆ PRINTING SPEED UP TO 406M/MIN
- ◆ WIRELESS KEYBOARD AND MOUSE CONTROL
- ◆ ANTI-COUNTERFEITING TRACE DATA PRINTING
- ◆ NETWORK REMOTE CENTRALIZED MANAGEMENT
- ◆ INDEPENDENT NOZZLE MAKES FLEXIBLE AND EFFICIENT
- ◆ CALCULATE PRINTING COSTS IN REAL TIME
- ◆ GS1 INTERNATIONAL MEDICINE MONITOR CODE



◆ More reliable and professional hardware

Use of the American TI's AM3358 Industrial Grade CPU, Xilinx Spant6 Industrial Grade FPGA. More stable, reliable and anti-interferences in various conditions rendering the printing a unique experience.

The print engine uses TIJ dedicated ASIC chip, a perfect match for a variety of original and licensed HP Inks.

Professional Cartridge preheat algorithm to ensure optimum print quality at high and low temperatures and environments.

◆ More Powerful and Smarter software

Intelligent embedded Linux operating system provides a professional and more user friendly interface.

Embedded powerful drop consumption algorithm that allow instant calculation of cost per print.

Powerful variable functions of the 2D Code to meet the today growing customers' demand.

Efficient and flexible variable database functions to meet various applications requirements for product traceability.

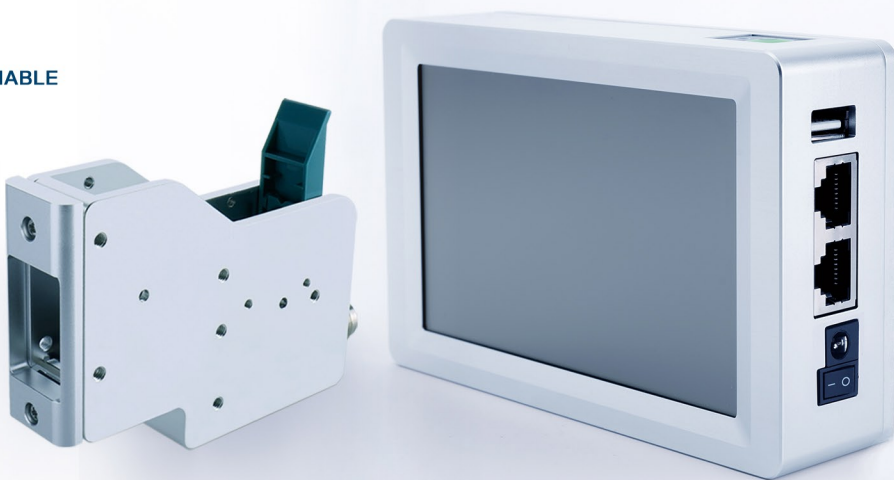
Codpad

DYNAMIC TRACEABILITY DATABASE HIGH SPEED PRINTING SOLUTION

Professional TIJ inkjet printer manufacturer

OEM ODM SDK ONE-STOP SERVICE

- ◆ INDUSTRIAL GRADE 5 INCH TOUCH SCREEN
- ◆ SNAP-ON CARTRIDGE, MORE SIMPLE AND RELIABLE
- ◆ ADJUSTABLE INKJET CONCENTRATION TO MEET DIFFERENT NEEDS
- ◆ SUPPORT LARGE CAPACITY INK BAGS AND CONTINUOUS INK SUPPLY SYSTEM
- ◆ MULTIPLE BRACKETS ALONG WITH VARIOUS INSTALLATION METHODS TO CHOOSE
- ◆ EASILY MATCH THE WEIGHING MACHINE PACKING AND PAGING MACHINE



Technical Parameters

Machine	Operating System	Embedded Operating System
	Main Hardware	American TI AM3358 industrial grade CPU/USA Xilinx Spant6 industrial grade FPGA / TIJ dedicated ASIC chip
	Communication Interface	Network Interface USB/RJ45 to RS-232
	External Interface	Photocell, Encoder, External Reverse/Inverse control, Alarm outputs, Serial Number external Reset, External data Selection.
	Supported Languages	Italian, English, French, Finnish, Arabic, Danish, German, Russian, Norwegian, Portuguese, Spanish, Japanese.
	Power Supply	100 - 240 Volts AC 50-60Hz input / 12Volts 3Amps DC output
	Body Material	Industrial Stainless steel
	Dimension	Controller 138mm x 87mm x 60mm / Head Holster 112mm x 79mm x 103mm
Working Environment	Max Temp 45 °C / Humidity 30% to 70% RH	
Printing Head	Nozzle Type	Thermally Foamable Head TIJ2.5
	Print Accuracy	150DPI / 300DPI / 600DPI
	Print Height	Minimum 1mm / Maximum 25.4mm
	Print Speed	406m/min at 90DPI, 304m/min at 120DPI, 120m/min at 300DPI, 60m/min at 600DPI
	Print Distance	2mm to 5mm
	Print Contents	Multi language Characters, 2DCode, Barcodes, Images, Serial Numbers, Date, Counters, Variable Database, RS232 to receive real data to print
	Printable Substrates	Cardboard, Plastic, Metal, Cables, Electronic components, Auto Parts, Industrial Chemical packaging, Pharmaceuticals and more.
	Ink Type	Aqueous or Solvent based 42ml Cartridges CISS
	Ink Color	Black, White, Red, Yellow, Blue, Green, Stealth, UV readable
Cartridge Chip	Contactless RFID tags for automatic identification and recording ink parameters and consumptions	



Packing carton



Medicine



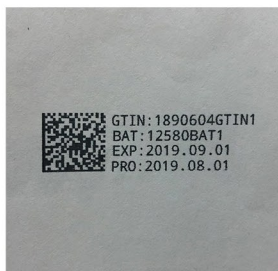
Furniture and wood



Food packaging



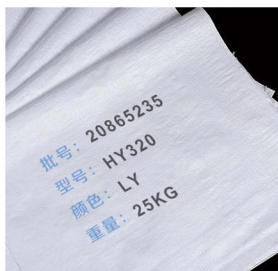
PET plastics



GS1 Data Matrix



Dynamic security barcode



Multi-group printing



HD bold font



Multi-dot font

Codpad

GUANGZHOU CODPAD E-TECH COMPANY LIMITED

TEL: (+86)20-81631033 E-mail: service@docod.com.cn

Fax number: (+86)20-81631033 Web: www.codpad.com

Add: Room 302, Building 3, NO.9, Hejing Road, LiWan District, Guangzhou, China